



XIV

Welcome to **WALA XIV**
Manama, Bahrain
May 29-31, 2024

Potential Challenges for the ATI and Border Security

Name: Karim Harb / Elie El Feghali

Organization: SITA

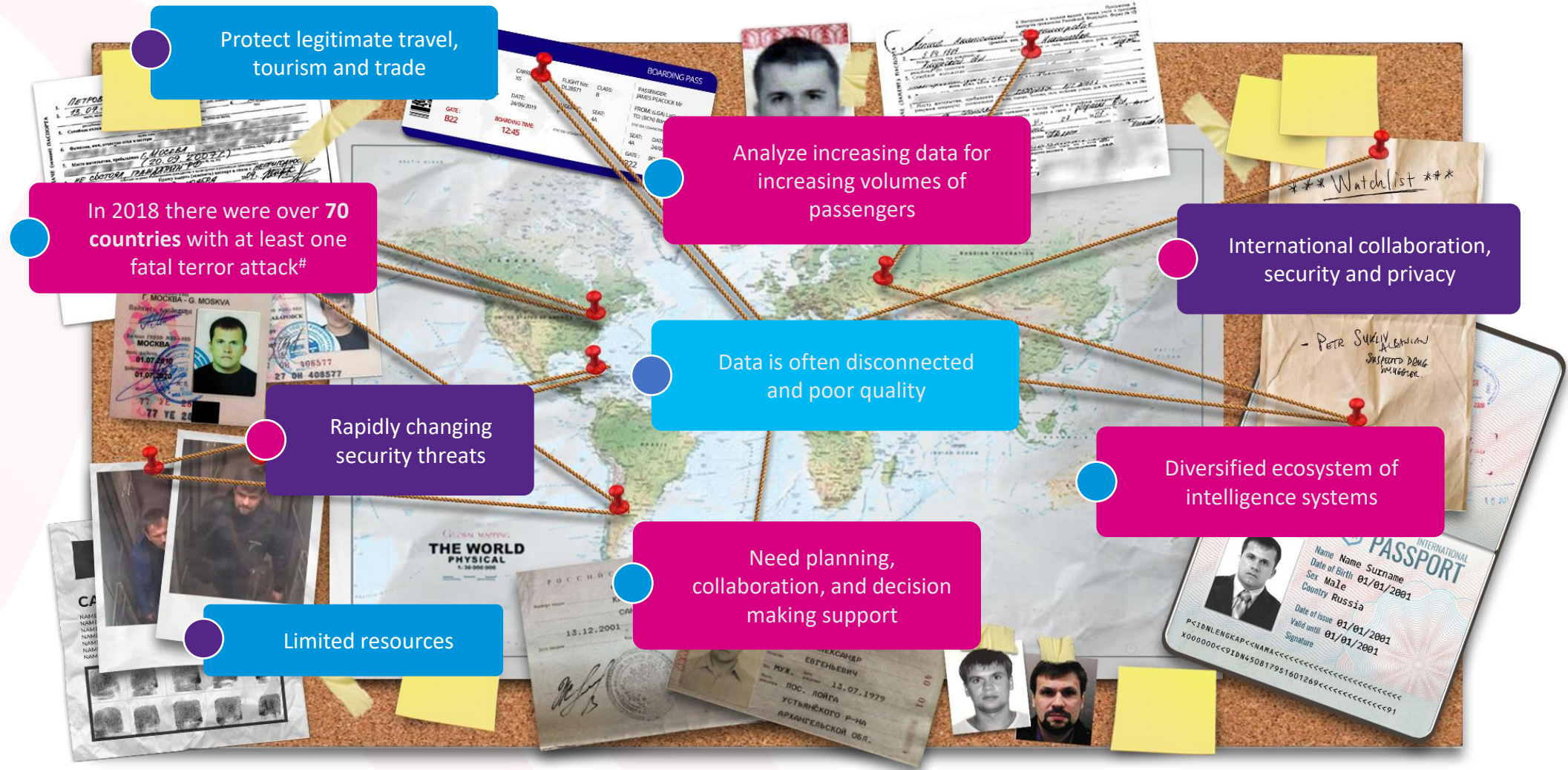
Date: 30-May-24

HOSTED BY:



Intelligence & Targeting Systems Overview

The need for intelligence-based border management



Protect legitimate travel, tourism and trade

Analyze increasing data for increasing volumes of passengers

International collaboration, security and privacy

In 2018 there were over 70 countries with at least one fatal terror attack#

Data is often disconnected and poor quality

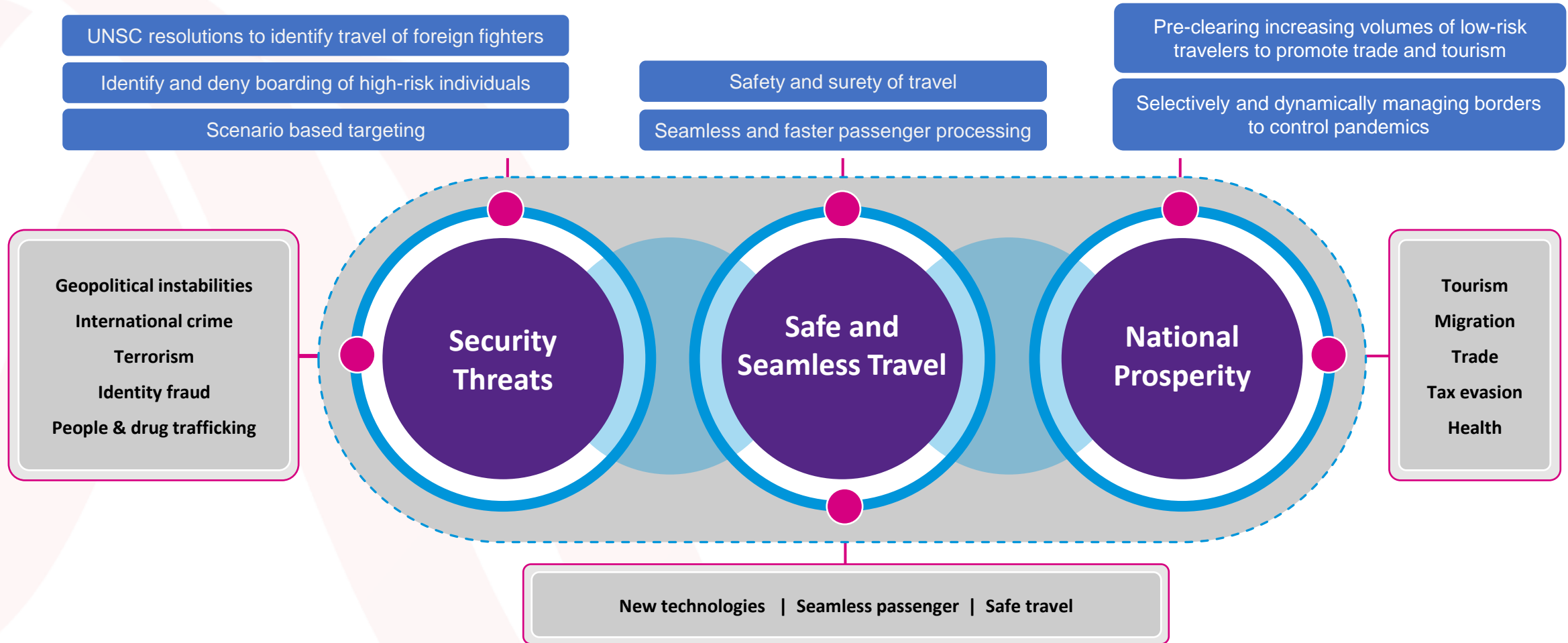
Diversified ecosystem of intelligence systems

Rapidly changing security threats

Need planning, collaboration, and decision making support

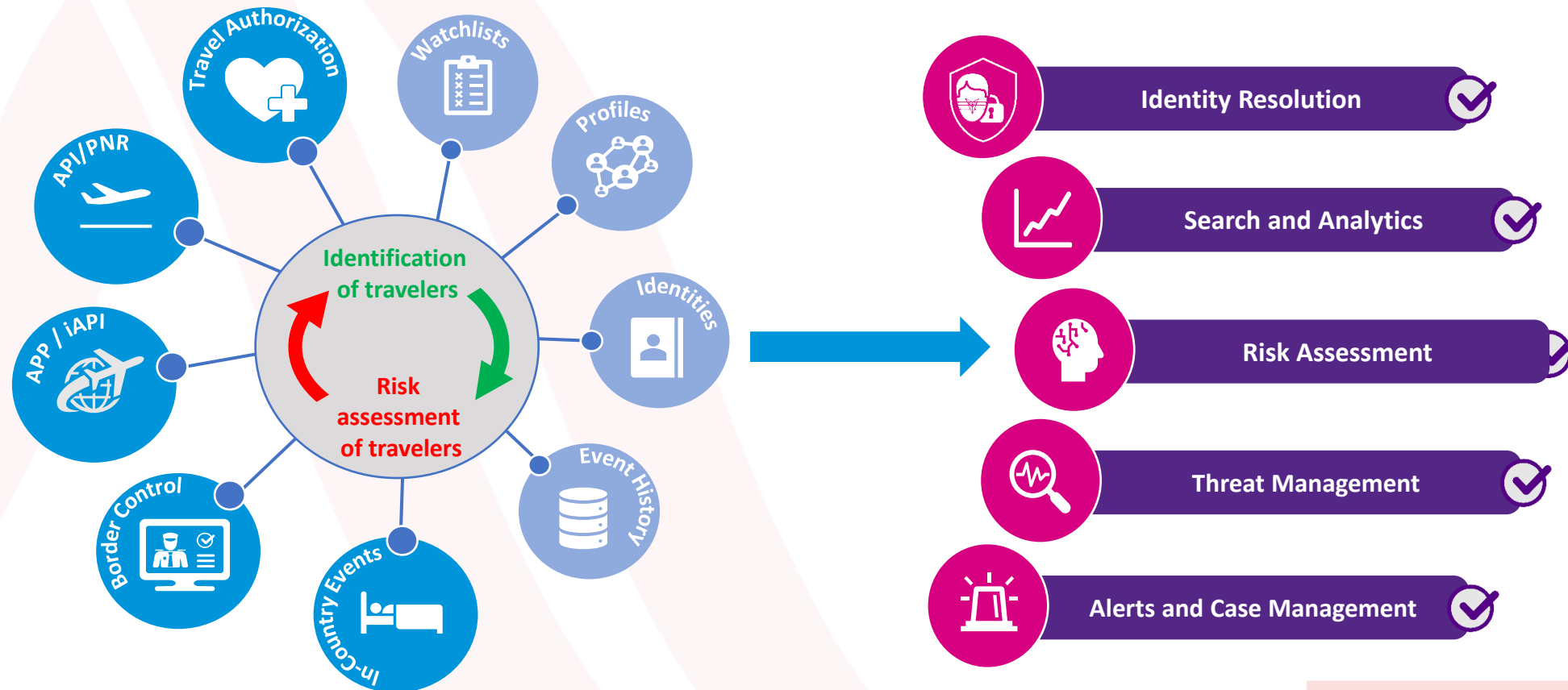
Limited resources

Border Management industry drivers

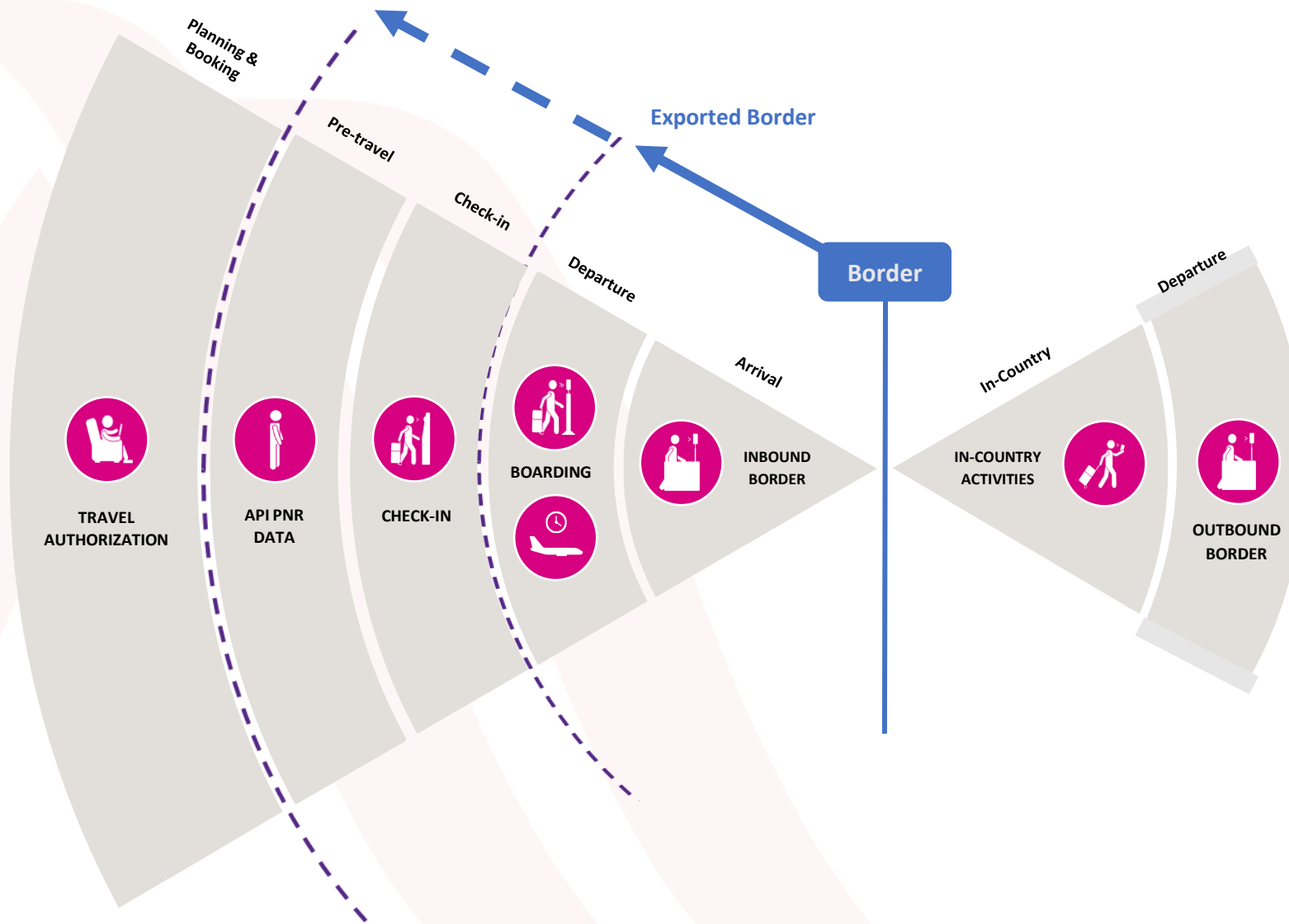


The intelligence behind border operations and passenger experience

- The systems used by government to address these requirements are commonly referred to as Intelligence & Targeting Systems



Layered approach to Integrated Border Management

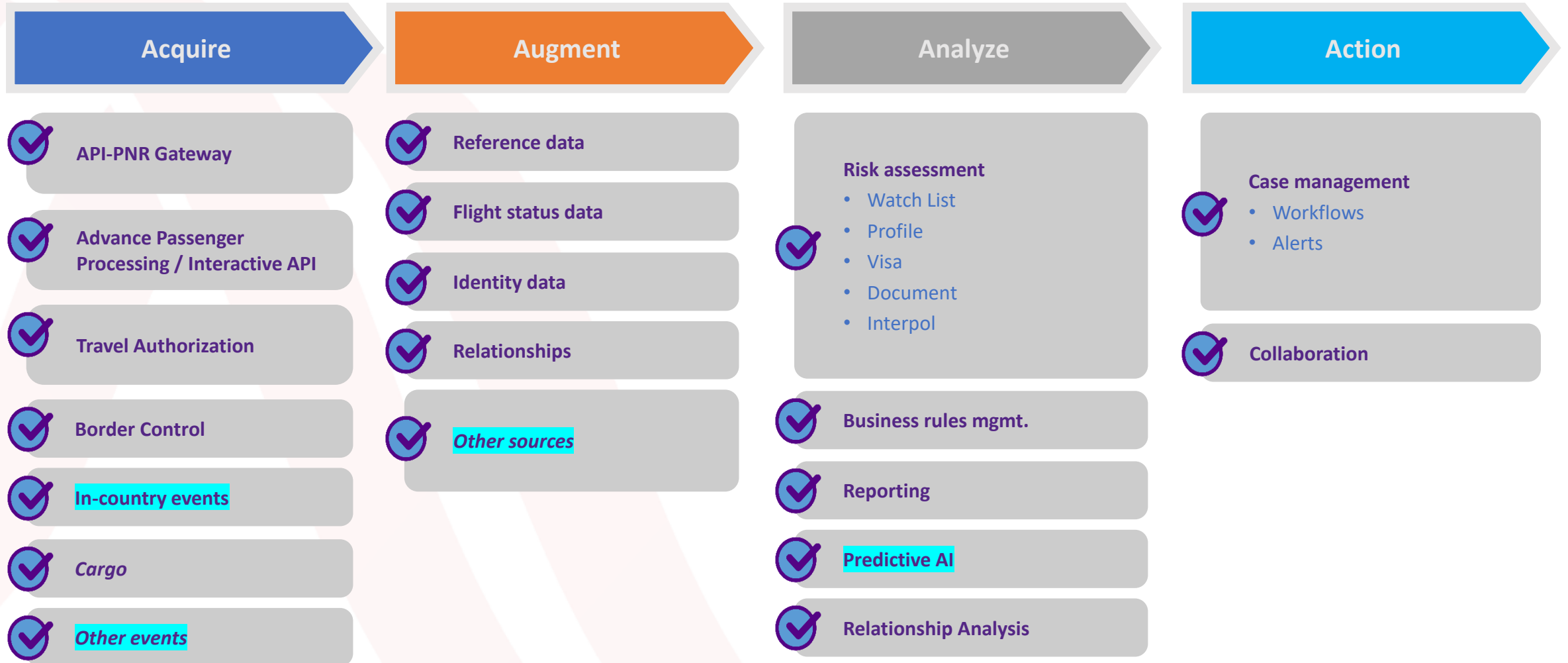


✓ Deny boarding undesirable travelers

✓ Supports a frictionless border

Data Challenges

Intelligence & Targeting System – Process Overview



Potential Elements of Concern

- Different Governments have different attitudes to Personal Data, and legislation varies worldwide.
- Challenge: ensure compliance with various international data regimes (e.g. GDPR) whilst meeting requirements of specific Governments.
- Balance to be struck: Because more data sources = richer data sets.
- An Ethical Issue for the Service Provider: What activities are you comfortable with?
 - Collection of data from 'open sources' e.g. web data, public records?
 - Collection and processing of data from social media accounts?
 - Who collects?
 - Can ask Governments to collect the data and confirm it is lawfully collected?
 - Protections for Service Provider: warrant lawfully collected / compliance with laws / indemnity / right to audit
- Decision maker: human or machine?

Commercial Challenges

Commercial Challenges

- Security surcharge on Airlines tickets: related remittances to fund security systems expenditures
 - Improve security, facilitate and improve passenger processing
- Passenger charges:
 - Government / Project Owner Collection.
 - Vendor Collection.
- Charges vary dependent on
 - Country's annual air passenger volumes
 - Size, complexity and customization of the system
- Charges typically passed on to passengers
- Concerns:
 - 1) Increase in travel costs ->? Risk: Reduction of travel volumes?
 - 2) Security charges to fund non-security projects:
 - Further transfer of project funding to passengers ->? Increased risk of reduction in travel volumes?



HOSTED BY:



Thank you!

Name: Karim Harb / Elie El Feghali

Email:

karim.harb@sita.aero

elie.el_feghali@sita.aero

Organization: SITA

Position:

Commercial Director

Legal Director